



Cell : 9346251441
☎ 08814-222128



SRI DASARI NARAYANA RAO

GOVERNMENT DEGREE COLLEGE FOR WOMEN

(Affiliated to Adikavi Nannaya University, Rajamahendravaram)
An ISO Certified Organisation



Beside Municipal Office, Main Road, PALAKOL-534260, W.G.Dt., A.P.
e-mail : dnrjkc@gmail.com website : www.sridnrgdcw.ac.in

Dr. P. Sobha Rani
M.A., M.Phil., Ph.D., PGDTE
Principal

Student Satisfaction Survey 2024-2025

Student Satisfaction Survey (SSS) on overall institution a performance

Students are the primary stake holders of an institution, and every initiative taken by the institution aims to create a supportive, barrier-free environment that fosters academic excellence. This survey follows the questionnaire framework recommended by NAAC, covering areas such as classroom experience, administrative performance, and the quality of extracurricular offerings. While online student satisfaction surveys can be distributed in various formats, email remains one of the most effective methods for reaching students.

GUIDELINES FOR STUDENTS:

Student will have to respond to all the questions compulsorily with sincere effort and thought. Student identity will not be revealed.

This survey is being conducted by Sri DNR Govt Degree College for Women, Palakol with the aim to upgrade the quality in higher education.

Each question has five options and the students are required to choose the most appropriate one.

Students are required to give answers for the following questions:

1. Student Name
2. Mobile Number
3. What subject are Aare you currently pursuing?

SURVEYPROCESS:

- The survey is conducted and reported by Internal Quality Assurance Cell(IQAC) with the support of Heads and Coordinators of all the Departments. The Questioners were prepared in the form of Google Form and circulated to all the Departments and then to Students through Coordinators.
- The feedback was taken on different attributes like; Basic Facilities, Basic Services, Co-curricular and Extracurricular Activities.
- The responses obtained on these dimensions are compiled into a Spread Sheet, analyzed and Logical Conclusions are drawn there from.
- The Questionnaire consisting of 21 questions is shared with the students and their responses are noted and analyzed graphically in terms of percentage. After analysis, results are analyzed by IQAC Team.
- The results of the survey will help the institution to understand both short term and long term needs of the students and initiate remedial action to improve the facilities wherever it is required. The outcome of this survey will provide a base for planning for the future.
- IQAC conveys thanks to the students who have expressed their opinions and/or views sincerely.

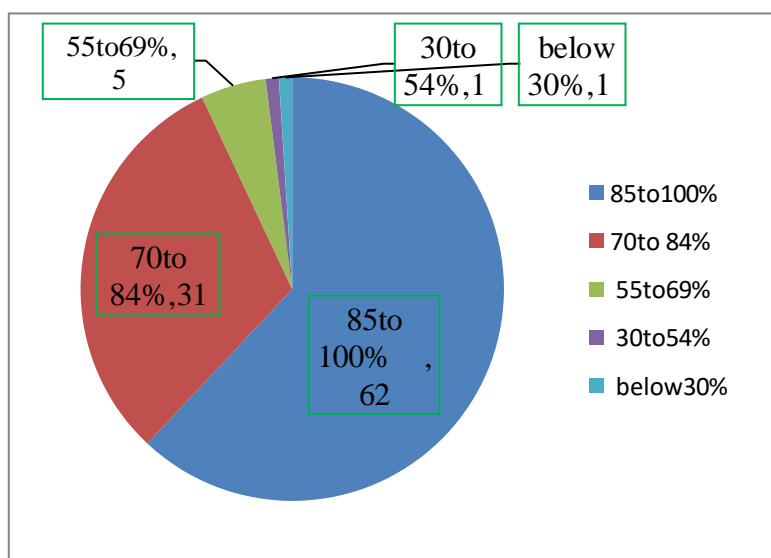
QUESTIONSASKEDIN QUESTIONNAIRE:

1. How much of the syllabus was covered in the class?
2. How well did the teachers prepare for the classes?
3. How well are the teachers able to communicate?
4. The Teacher's approach to teaching can best be described as
5. Fairness of the internal evaluation process by the teachers
6. Was your performance in assignments discussed with you?
7. The teacher takes active interest in arranging field visit for students.
8. The teaching process in the class room facilitates you in cognitive, social and emotional growth.
9. The teacher provides multiple opportunities to learn and grow
10. The teacher informs you about your expected competencies, course outcomes and programme outcomes.
11. Your teacher does easy necessary follow-up with an assigned task to you.
12. The teacher illustrates the concepts through examples and applications.

13. The teacher identifies your strengths and encourages you with providing right level of challenges.
14. The teacher is able to identify your weaknesses and help you to overcome them.
15. The teacher makes effort to engage students in the monitoring, review and continuous quality improvement of the teaching learning process.
16. The teachers use student centric methods, such as experiential learning, participative learning and problem solving for enhancing learning experiences.
17. The teacher encourages out o participate in extracurricular activities.
18. Efforts are made by the teacher to inculcate soft skills, life skills and employability skills to make you ready for the world of work
19. The teacher uses ICT Tools such as LCD Projector, Multimedia, etc. while teaching
20. The overall quality of teaching-learning process in your institute is very good.
21. Give three observations/suggestionsto improvethetheoverallteaching-learning experience in the class with reference to the teacher.

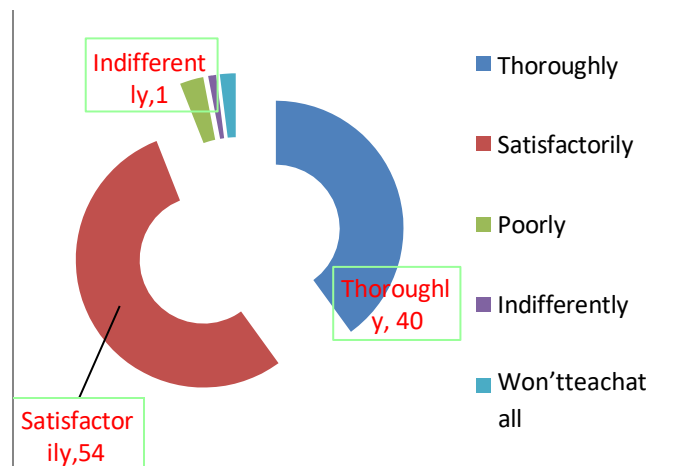
1. How much of the syllabus was covered in the class?

S.No	Option	Percentage of Response
1	85to100%	62
2	70to84%	31
3	55to69%	5
4	30to54%	1
5	below30%	1
	Total	100



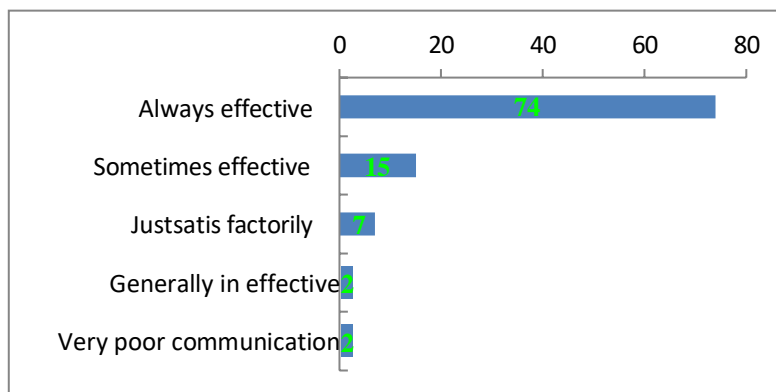
2. How well did the teachers prepare for the class?

S.No	Option	Percentage of Response
1	Thoroughly	40
2	Satisfactorily	54
3	Poorly	3
4	Indifferently	1
5	Won't teach at all	2
	Total	100



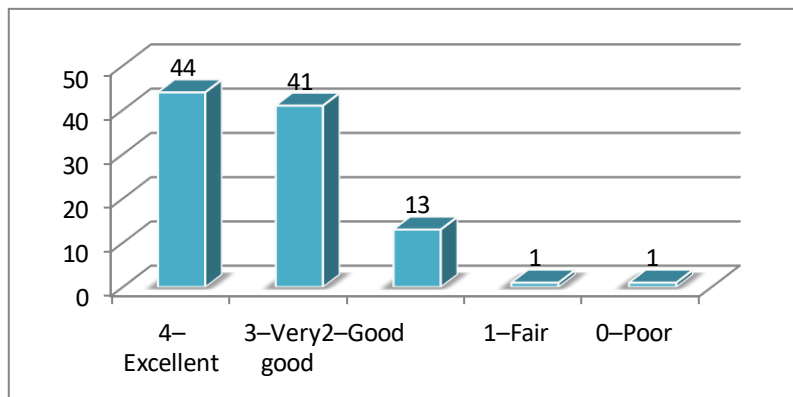
3. How well were the teachers able to communicate?

S.No	Option	Percentage of Response
1	Always effective	74
2	Sometimes effective	15
3	Just satisfactorily	7
4	Generally ineffective	2
5	Very poor communication	2
	Total	100



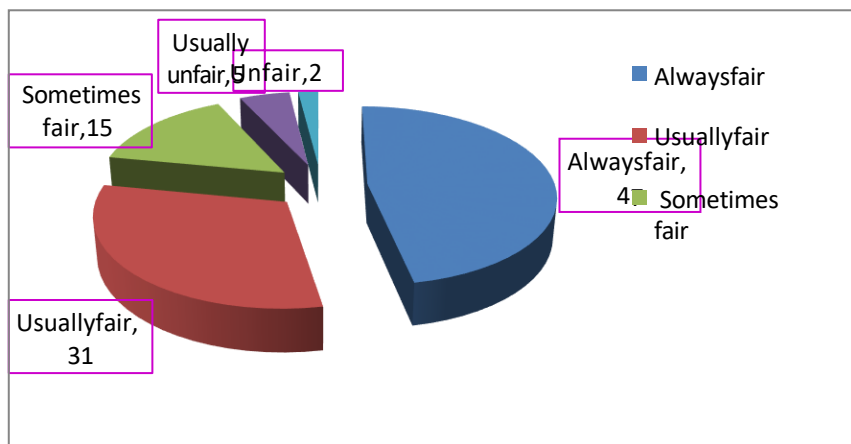
4. The teacher's approach to teaching can best be described as

S.No	Option	Percentage of Response
1	4 –Excellent	44
2	3–Verygood	41
3	2 –Good	13
4	1–Fair	1
5	0–Poor	1
	Total	100



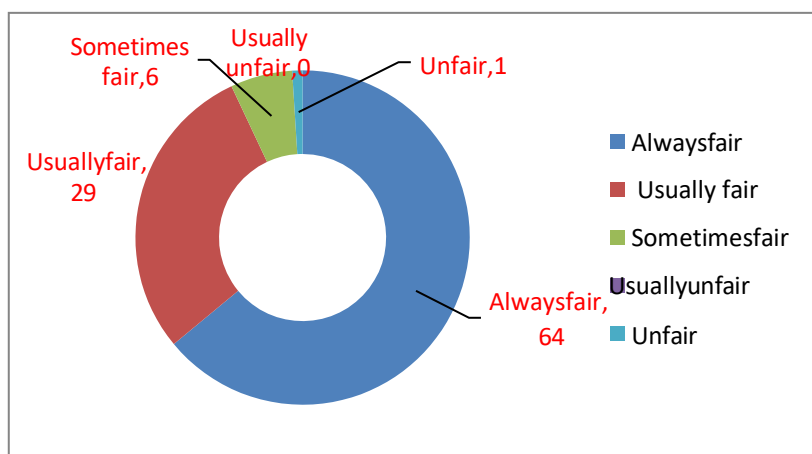
5. Fairness of the internal evaluation process by the teachers

S.No	Option	Percentage of Response
1	Always fair	47
2	Usually fair	31
3	Sometimes fair	15
4	Usually unfair	5
5	Unfair	2
	Total	100



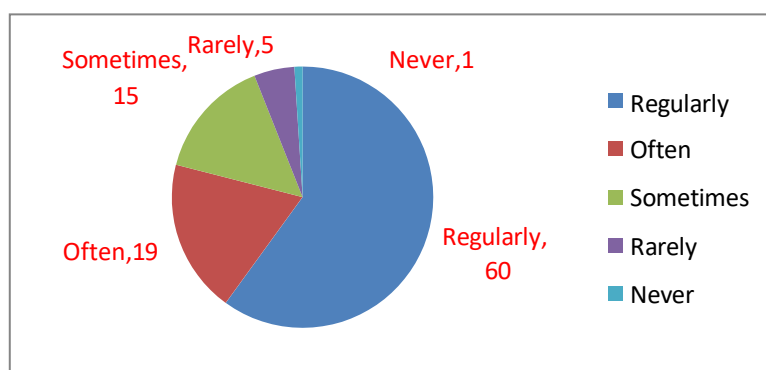
6. Was your performance in assignments discussed with you?

S.No	Option	Percentage of Response
1	Always fair	64
2	Usually fair	29
3	Sometimes fair	6
4	Usually unfair	0
5	Unfair	1
	Total	100



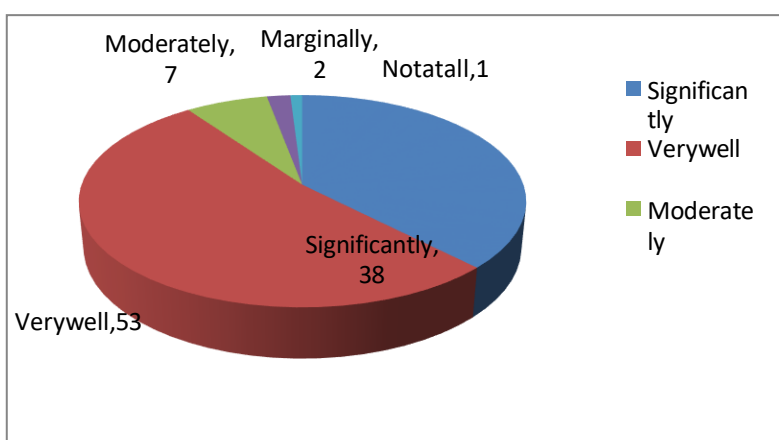
7. The institute takes active interest in promoting internship, student exchange, and field visit opportunities for students.

S.No	Option	Percentage of Response
1	Regularly	60
2	Often	19
3	Sometimes	15
4	Rarely	5
5	Never	1
	Total	100



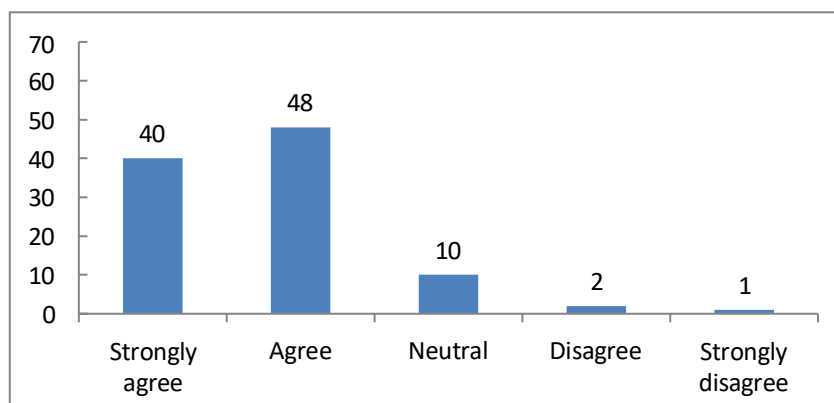
8. The teaching and monitoring process in your institution facilitates you in cognitive, social and emotional growth

S.No	Option	Percentage ofResponse
1	Significantly	38
2	Very well	53
3	Moderately	7
4	Marginally	2
5	Notatall	1
	Total	100



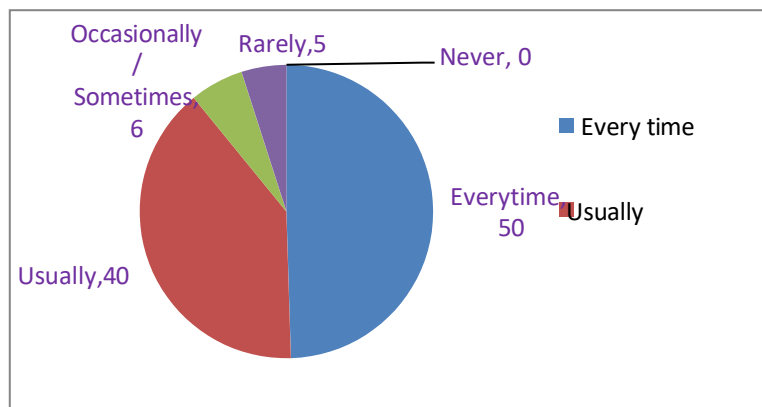
9. The institute provides multiple opportunities to learn and grow

S.No	Option	Percentage ofResponse
1	Strongly agree	40
2	Agree	48
3	Neutral	10
4	Disagree	2
5	Strongly disagree	1
	Total	100



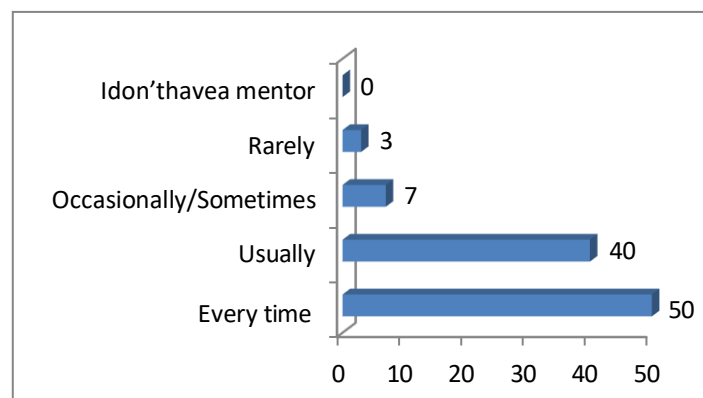
10. Teachers inform you about your expected competencies, course, outcome and programme outcomes

S.No	Option	Percentage of Response
1	Everytime	50
2	Usually	40
3	Occasionally/ Sometimes	6
4	Rarely	5
5	Never	0
	Total	100



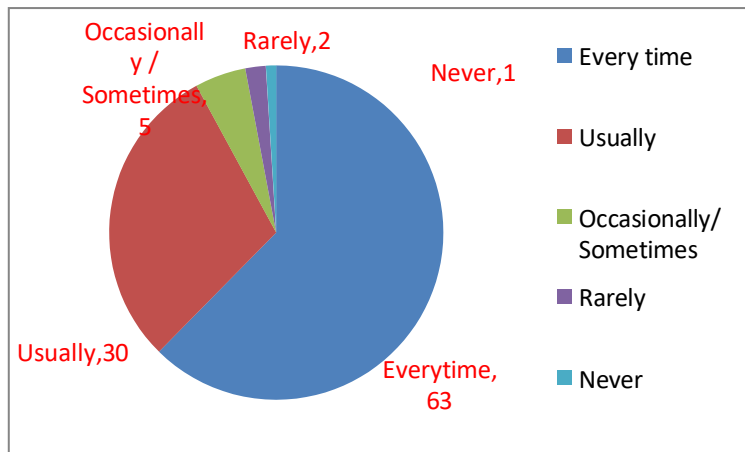
11. Your mentor does a necessary follow-up with an assigned task to you

S.No	Option	Percentage of Response
1	Everytime	50
2	Usually	40
3	Occasionally/ Sometimes	7
4	Rarely	3
5	Idon'thavea mentor	0
	Total	100



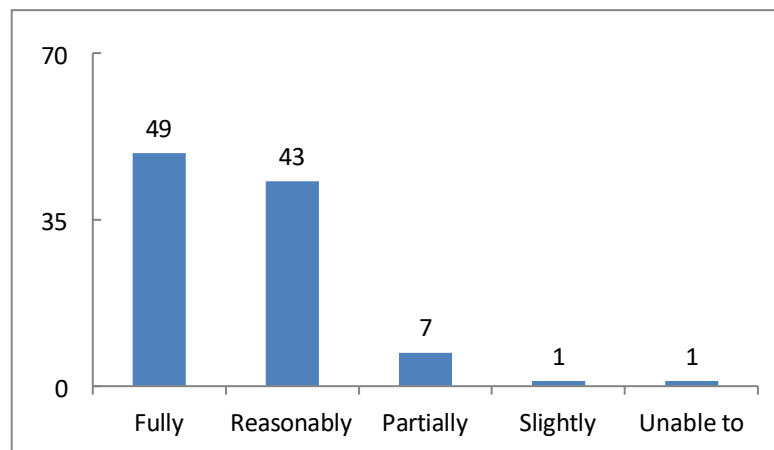
12. The teachers illustrate the concepts through examples and applications

S.No	Option	Percentage of Response
1	Everytime	63
2	Usually	30
3	Occasionally/ Sometimes	5
4	Rarely	2
5	Never	1
	Total	100



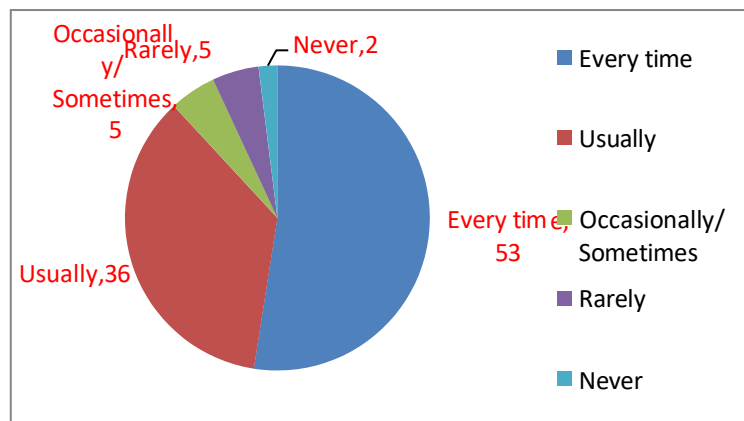
13. The teachers identify your strengths and encourage you with providing right level of challenges.

S.No	Option	Percentage of Response
1	Fully	49
2	Reasonably	43
3	Partially	7
4	Slightly	1
5	Unable to	1
	Total	100



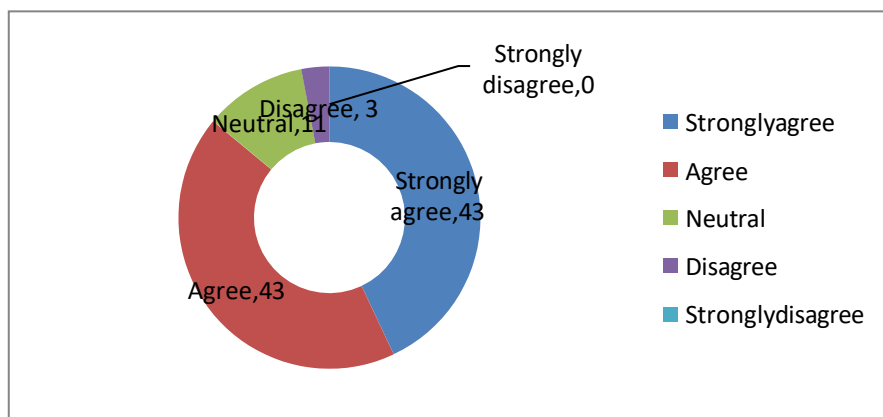
14. Teachers are able to identify your weaknesses and help you to overcome them

S.No	Option	Percentage ofResponse
1	Everytime	53
2	Usually	36
3	Occasionally/ Sometimes	5
4	Rarely	5
5	Never	2
	Total	100



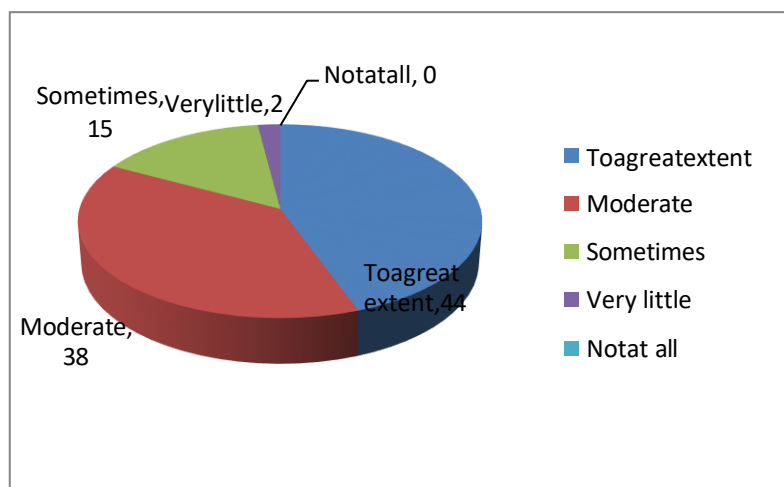
15. The institution makes effort to engage students in the monitoring, review and continuous quality improvement of the teaching learning process

S.No	Option	Percentage ofResponse
1	Stronglyagree	43
2	Agree	43
3	Neutral	11
4	Disagree	3
5	Stronglydisagree	0
	Total	100



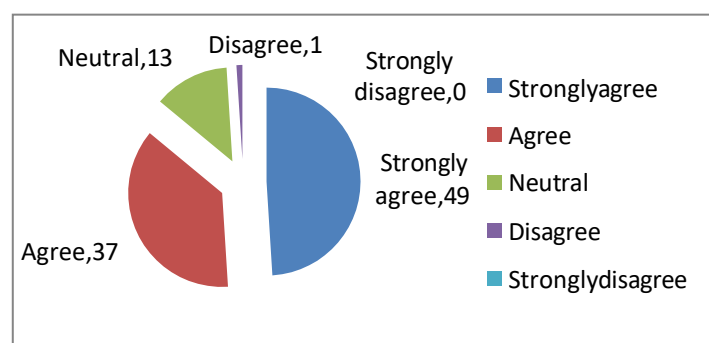
16. The institute / teachers use student centric methods, such as experimental learning, participative learning and problem solving methodologies for enhancing learning experiences.

S.No	Option	Percentage ofResponse
1	To a great extent	44
2	Moderate	38
3	Sometimes	15
4	Very little	2
5	Not at all	0
	Total	100



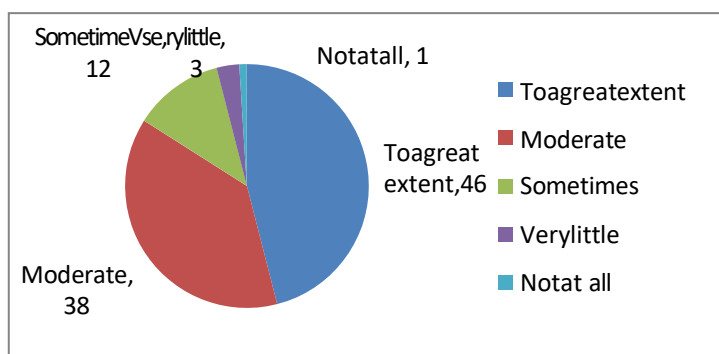
17. Teachers encourage you to participate in extracurricular activities

S.No	Option	Percentage ofResponse
1	Strongly agree	49
2	Agree	37
3	Neutral	13
4	Disagree	1
5	Strongly disagree	0
	Total	100



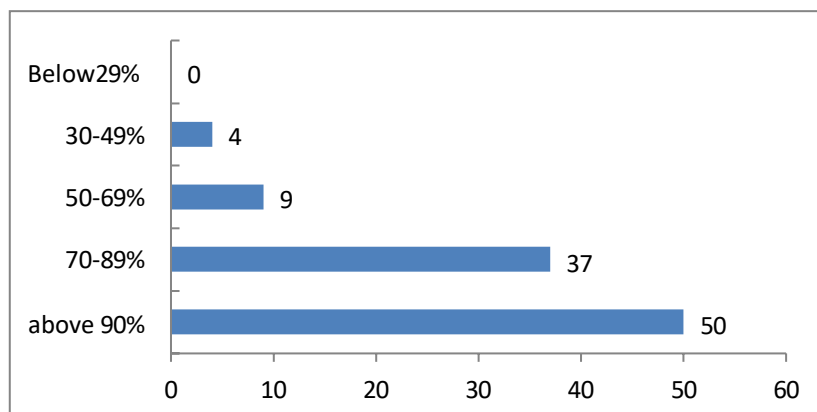
18. Efforts are made by the institute/teachers to inculcates of skills, lifes kills and employability skills to make you ready for the world of work

S.No	Option	Percentage of Response
1	To a great extent	46
2	Moderate	38
3	Sometimes	12
4	Very little	3
5	Not at all	1
	Total	100



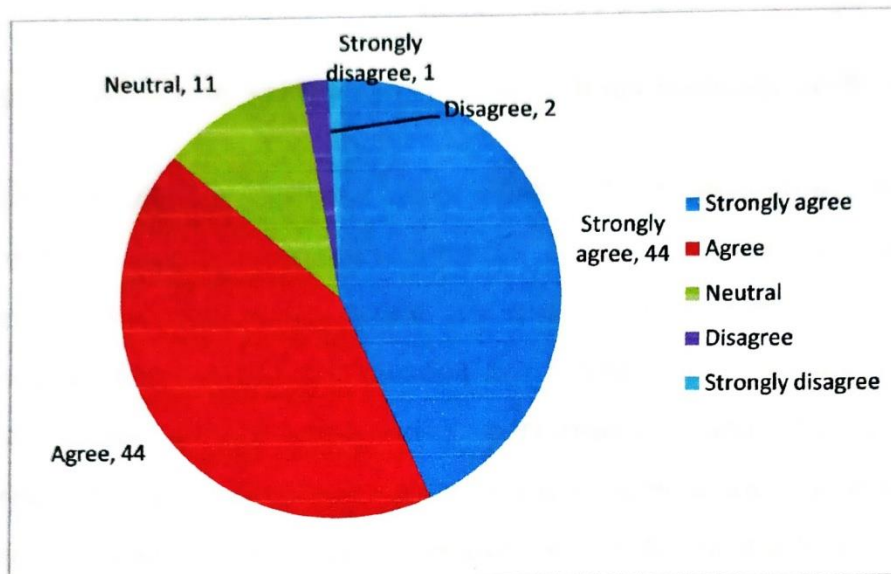
19. What percentage of teachers use ICT tools such as LCD projector, Multimedia, etc. While teaching

S.No	Option	Percentage of Response
1	above 90%	50
2	70-89%	37
3	50-69%	9
4	30-49%	4
5	Below 29%	0
	Total	100



20. The overall quality of teaching – learning process in your institute is very good

S. No	Option	Percentage of Response
1	Strongly agree	44
2	Agree	44
3	Neutral	11
4	Disagree	2
5	Strongly disagree	1
	Total	100



21. Give three observations / suggestions to improve the overall teaching – learning experience in your institution

Some of Suggestions are listed here

- Improve lab facilities
- Need infrastructure and advanced lab facilities
- Please provide games facility, Equipped lab


Principal

PRINCIPAL
Sri D.N.R. Govt. Degree College for Women
PALAKOL-534260, W.G. Dist.